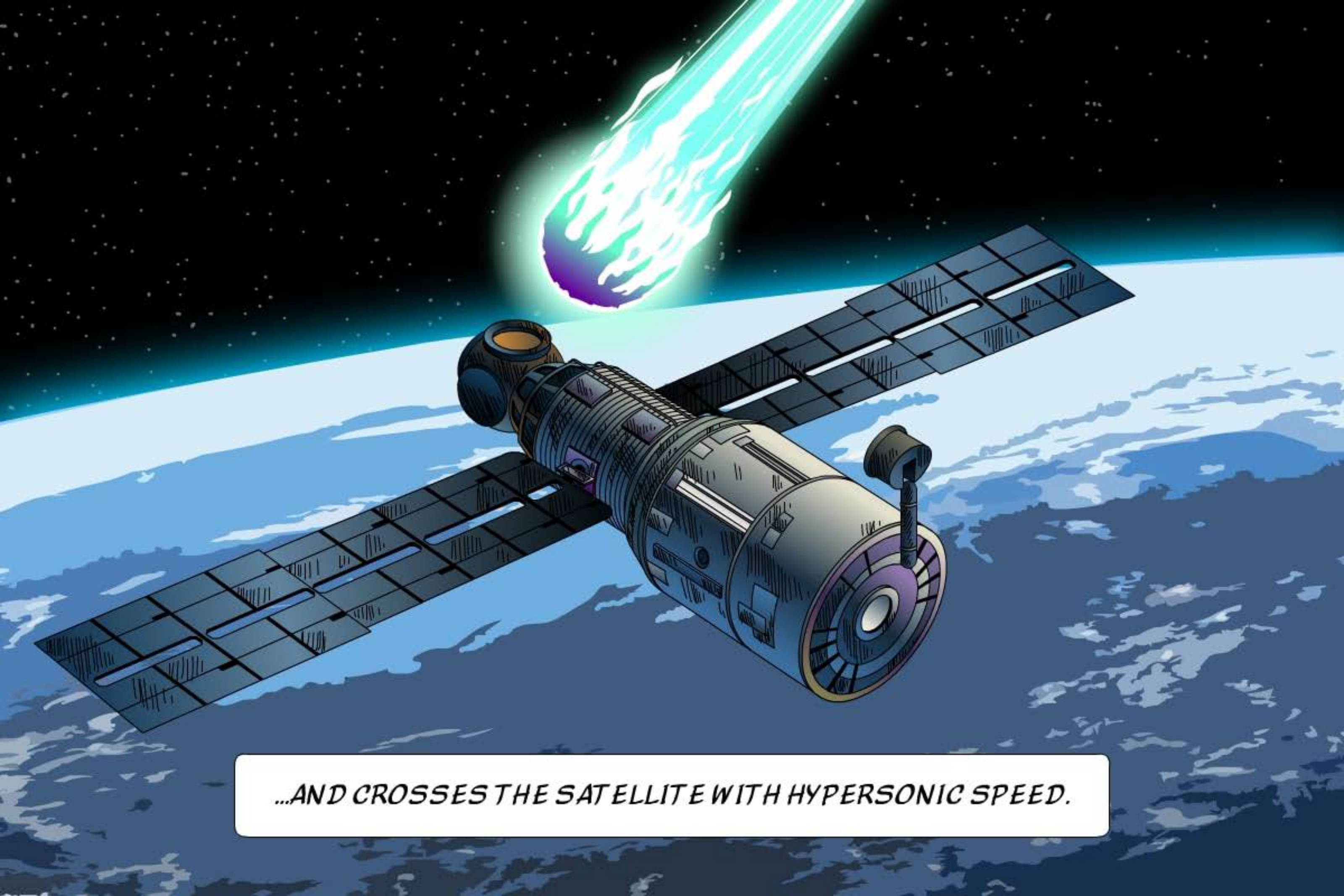


EPISODE - 13

All Copyright Reserved




THAT POWER BALL IS VERY NEAR TO EARTH...



...AND CROSSES THE SATELLITE WITH HYPERSONIC SPEED.



IT IS MOVING SO FAST NONE OF THE ASTRONAUTS COULD MAKE OUT NEITHER ANY HIGH-TECH MACHINE NOR ANY HIGH-LEVEL TELESCOPE, AND TECHNOLOGY COULD IDENTIFY THAT.



*OH GOD!! HOW ALL MACHINES,
INCLUDING POWER, STRANGELY
GOT SHUT DOWN IN THE SPACE
STATION??*

INSIDE SPACE STATION

*WHILE THE POWER BALL CROSSES THE SPACE STATION, ALL
MACHINES IN IT GOT SHUT DOWN FOR A FEW SECONDS.*



YES, WHAT'S THE MATTER?? HOW IT HAPPENED!! SEE POWER AGAIN CAME, STRANGE!!